



HODGES
MANAGEMENT AND
LEASING COMPANY

For Lease
33,615 sf

205 Bucknell Ct.
Atlanta Gateway



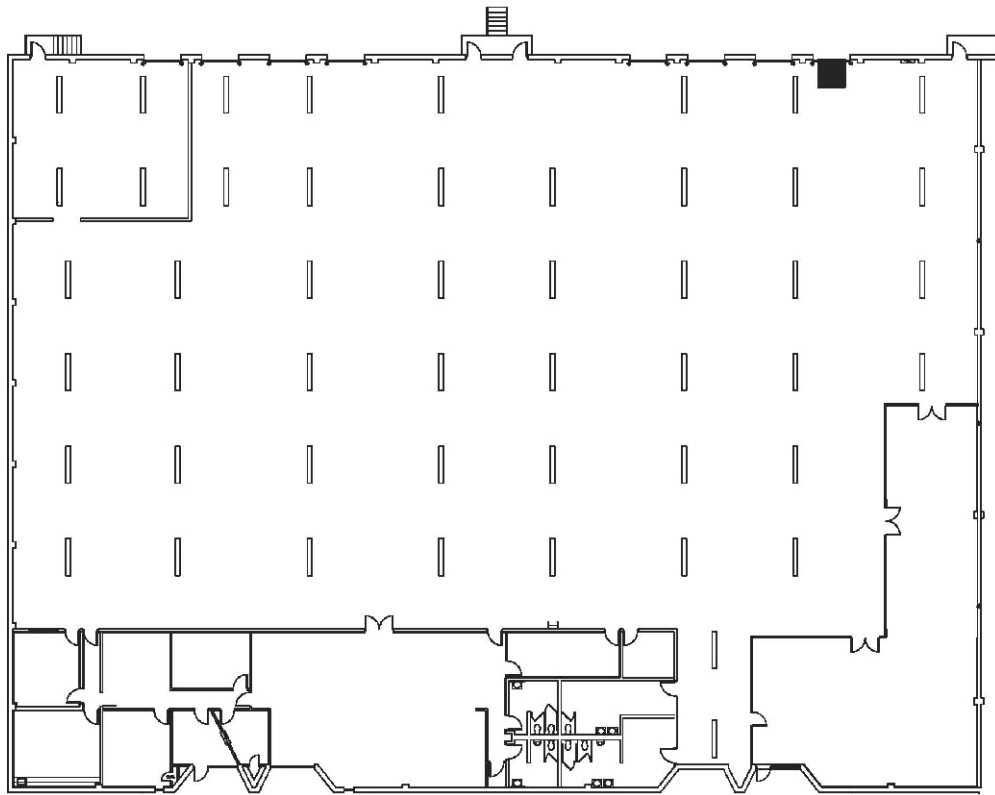
SUITE A
205 Bucknell Ct.
Atlanta, GA 30336

Owned By:
ING REAL ESTATE

205 Bucknell Court, Suite A

33,615 Square Feet Available

Available Space:	33,615 sf	Sprinkler:	Yes
Total Building:	75,584 sf	Roof:	Single Ply
Office:	4,959 sf	Stacking Height:	22'
Bay Size:	52'6 x 39'6	Doors:	8 (8x10) DH



For Leasing Information, Contact:

Bruce Logue

Bruce.logue@hodgesml.com 404.691.4007

3350 Riverwood Pkwy, Suite 850, Atlanta, GA 30339