



HODGES
MANAGEMENT AND
LEASING COMPANY

For Lease
13,225 sf

5300 Westpark Drive

Westpark



Suite B

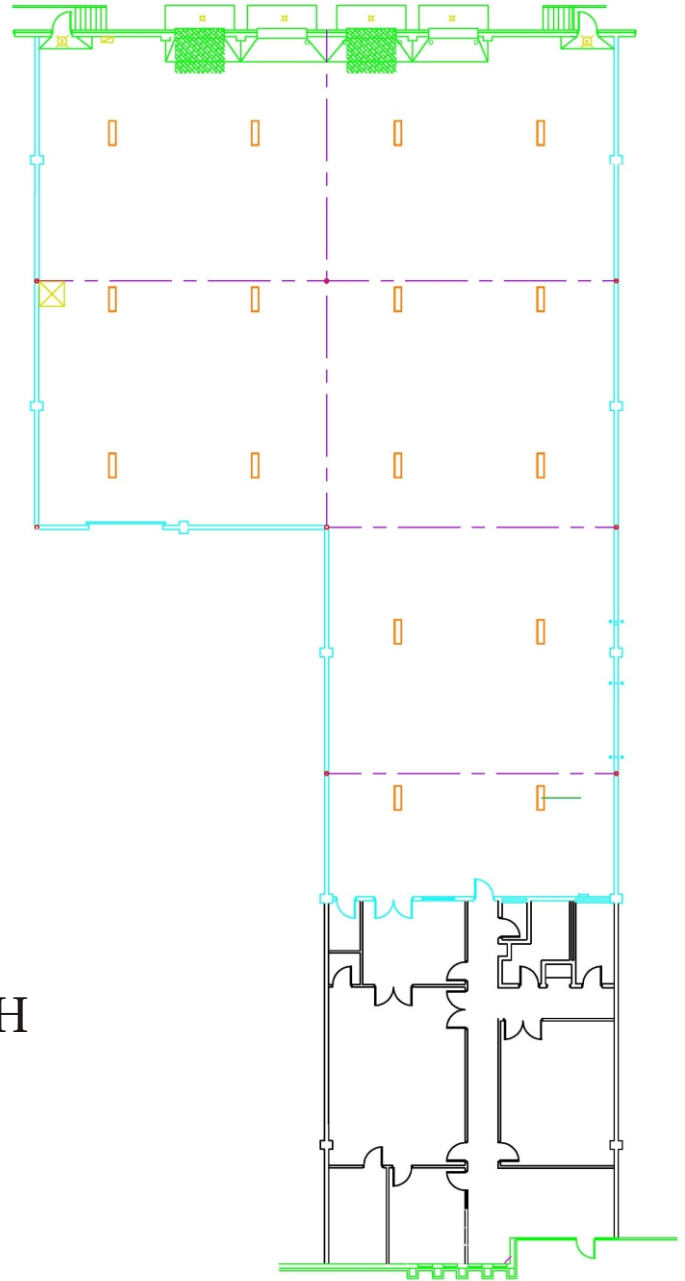
5300 Westpark Drive
Atlanta, GA 30336

ING 
REAL ESTATE

5300 Westpark Drive, Suite B

13,225 Square Feet Available

Available Space:	13,225 sf
Total Building:	68,546 sf
Office:	2,774 sf
Bay Size:	47' x 40'
Sprinkler:	Yes
Roof:	Single Ply
Stacking Height:	23'5
Doors:	4 (8 x 10) DH



For Leasing Information, Contact:

Bruce Logue

Bruce.logue@hodgesml.com 404.691.4007

3350 Riverwood Pkwy, Suite 850, Atlanta, GA 30339