



HODGES
MANAGEMENT AND
LEASING COMPANY

For Lease
30,513 sf

5300 Westpark Drive
Westpark



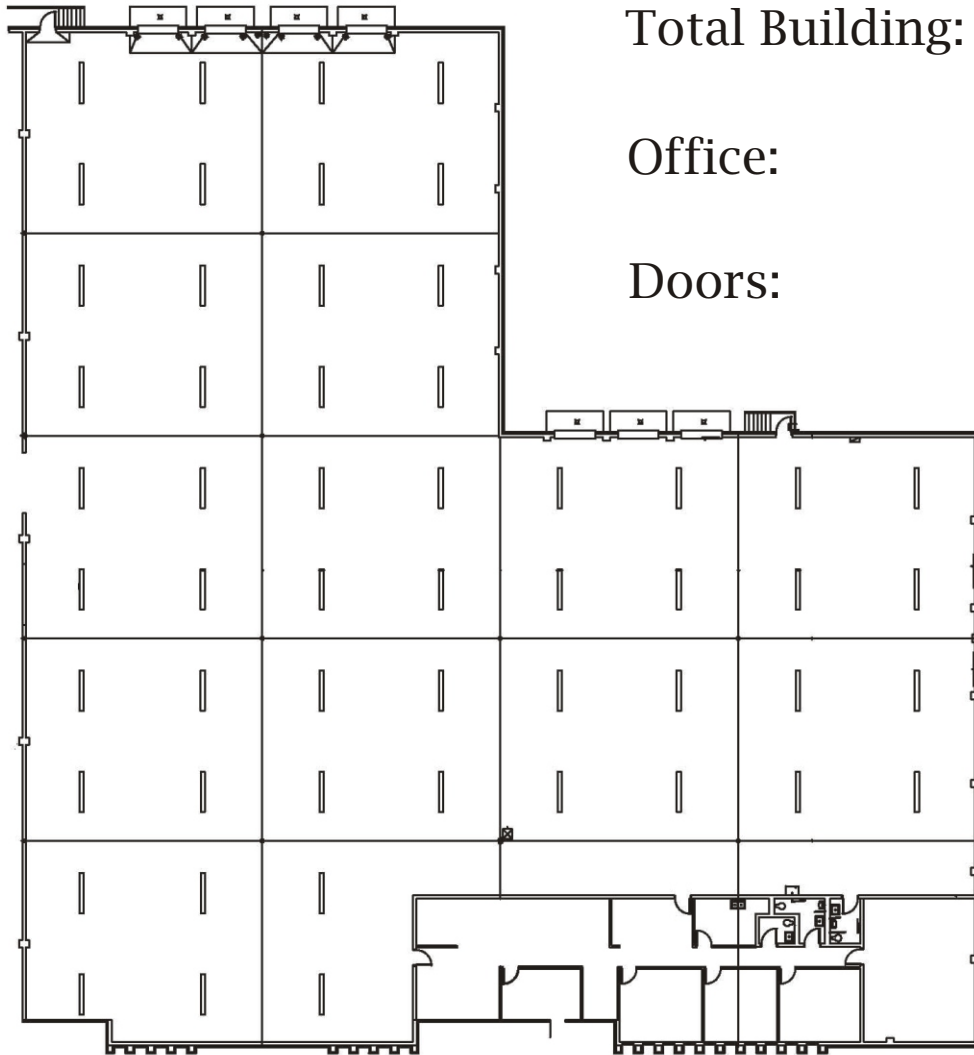
Suite C

5300 Westpark Drive
Atlanta, GA 30336

ING 
REAL ESTATE

5300 Westpark Drive, Suite C

30,513 Square Feet Available



Available Space: 30,513 sf

Total Building: 68,546 sf

Office: 2,691 sf

Doors: 7 (8 x 10) DH

Stacking Height: 23'5"

Bay Size: 47' x 40'

Sprinkler: Yes

Roof: Single Ply

For Leasing Information, Contact:

Bruce Logue

Bruce.logue@hodesml.com 404.691.4007

3350 Riverwood Pkwy, Suite 850, Atlanta, GA 30339