



HODGES
MANAGEMENT AND
LEASING COMPANY

For Lease
27,759 sf

5305 Fulton Industrial Blvd.
Atlanta Gateway



SUITE B

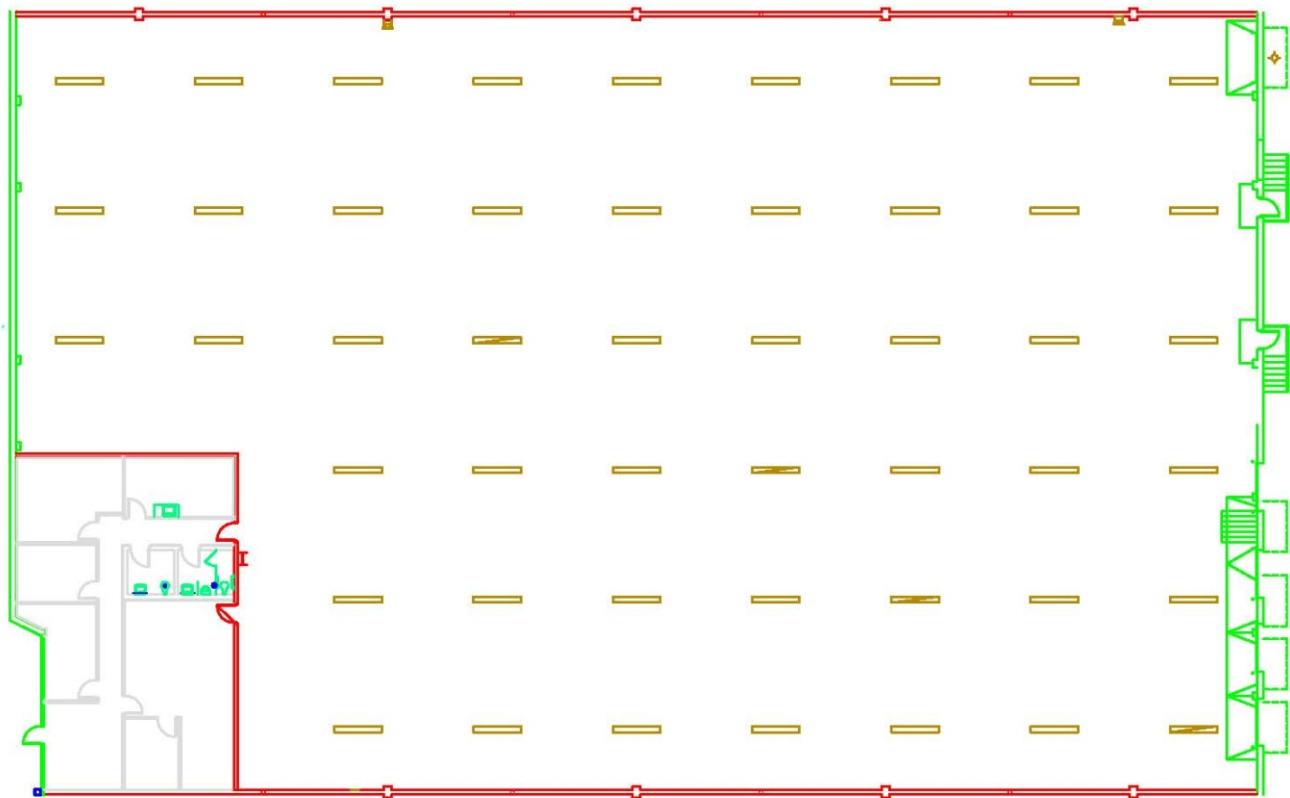
5305 Fulton Industrial Blvd.
Atlanta, GA 30336

ING 
REAL ESTATE

5305- B Fulton Industrial Blvd

27,759 Square Feet Available

Available Space:	27,759 sf	Sprinkler:	Yes
Total Building:	74,342 sf	Roof:	Single Ply
Office:	2,000 sf	Stacking Height:	23'
Bay Size:	42' x 43'9	Doors:	4 (8x10) DH



For Leasing Information, Contact:

Bruce Logue

bruce.logue@ingclarion.com 404.691.4007

3350 Riverwood Pkwy, Suite 850, Atlanta, GA 30339