



HODGES
MANAGEMENT AND
LEASING COMPANY

For Lease
19,263 sf

2960 Pacific Drive
Peachtree Corners

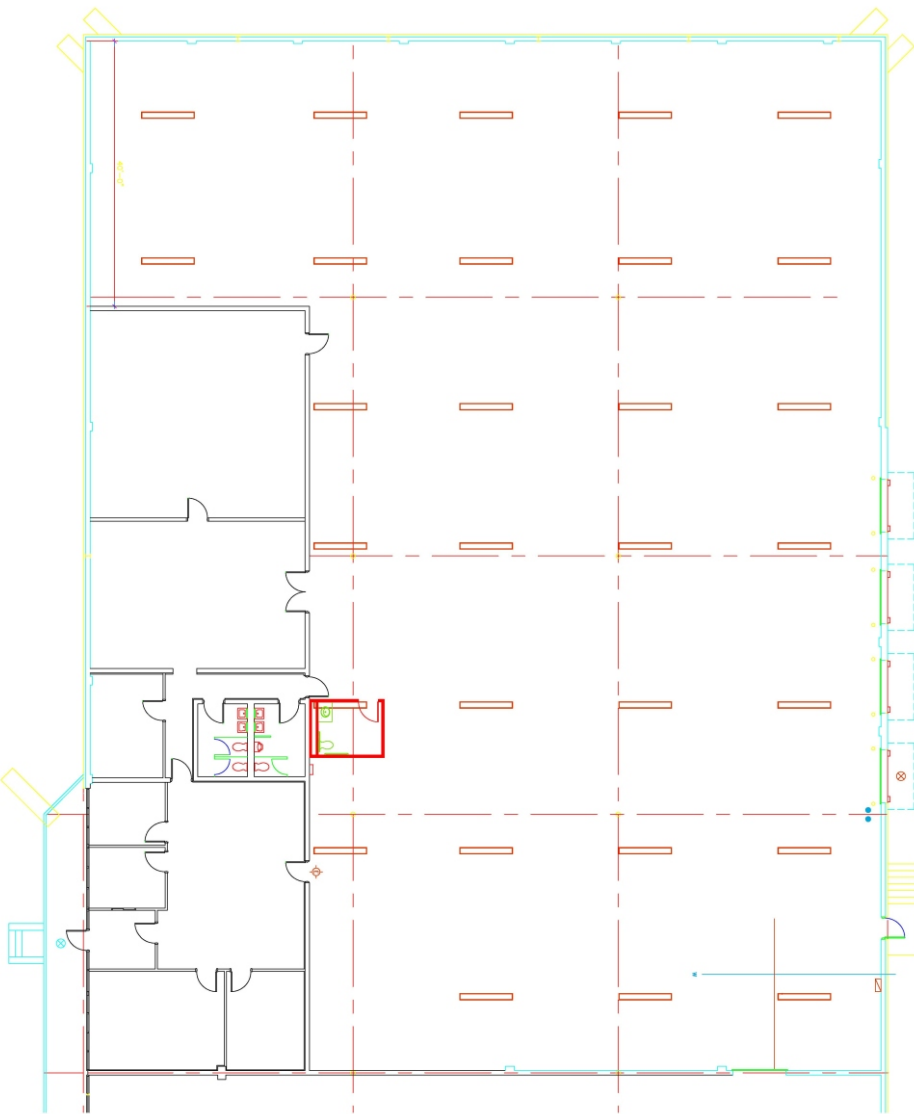


SUITE A
2960 Pacific Drive
Norcross, GA 30092

Owned By:
ING 
REAL ESTATE

2960 Pacific Drive, Suite A

19,263 Square Feet Available



Available Space: 19,263 sf

Total Building: 38,530 sf

Office: 4,160 sf

Bay Size: 39' x 40'

Stacking Height: 22'

Sprinkler: Yes

Doors: 4 (8 x 10) DH

For Leasing Information, Contact:

Chet Koenig

404.691.4007

Chet.koenig@hodesml.com

3350 Riverwood Pkwy, Suite 850

Atlanta, GA 30339