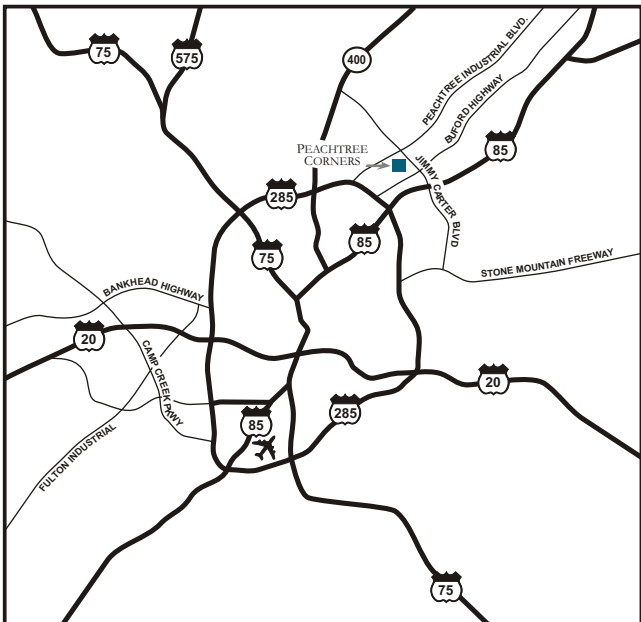




HODGES
MANAGEMENT AND
LEASING COMPANY

For Lease
20,249 sf

3045 Kingston Ct.
Peachtree Corners



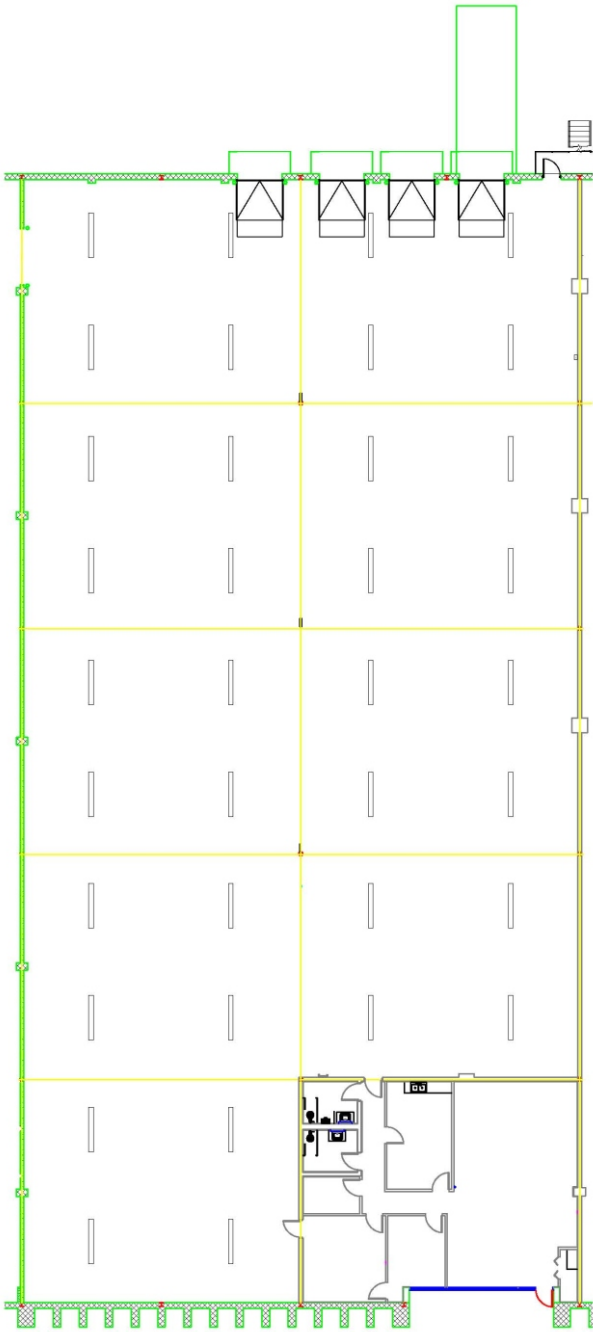
SUITE G

3045 Kingston Ct.
Norcross, GA

Owned By:
ING 
REAL ESTATE

3045 Kingston Court, Suite G

20,249 Square Feet Available



Available Space:	20,249 sf
Total Building:	101,549 sf
Office:	2,305 sf
Sprinkler:	Yes
Bay Size:	40'4 x 49'10
Stacking Height:	22'6
Building Depth:	203'
Doors:	3 (8 x 10) Dock High 1 (8 x 10) Drive In

For Leasing Information, Contact:

Chet Koenig

404.691.4007 Chet.koenig@hodgeaml.com

3350 Riverwood Pkwy, Suite 850, Atlanta, GA 30339