

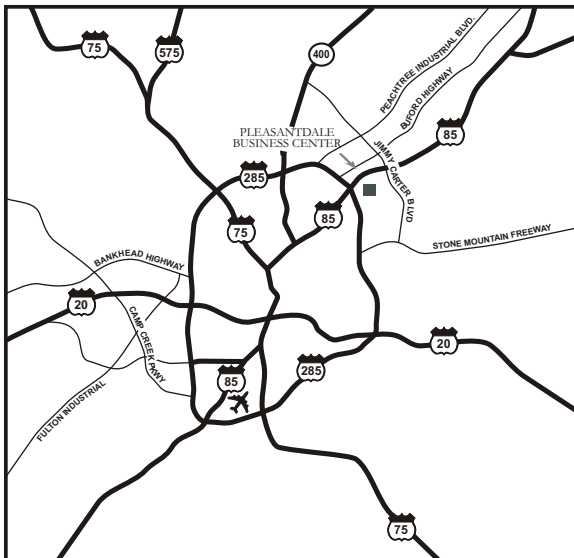


HODGES
MANAGEMENT AND
LEASING COMPANY

For Lease
1,812 sf



4025 Pleasantdale Road
Pleasantdale Business Center



SUITE 535

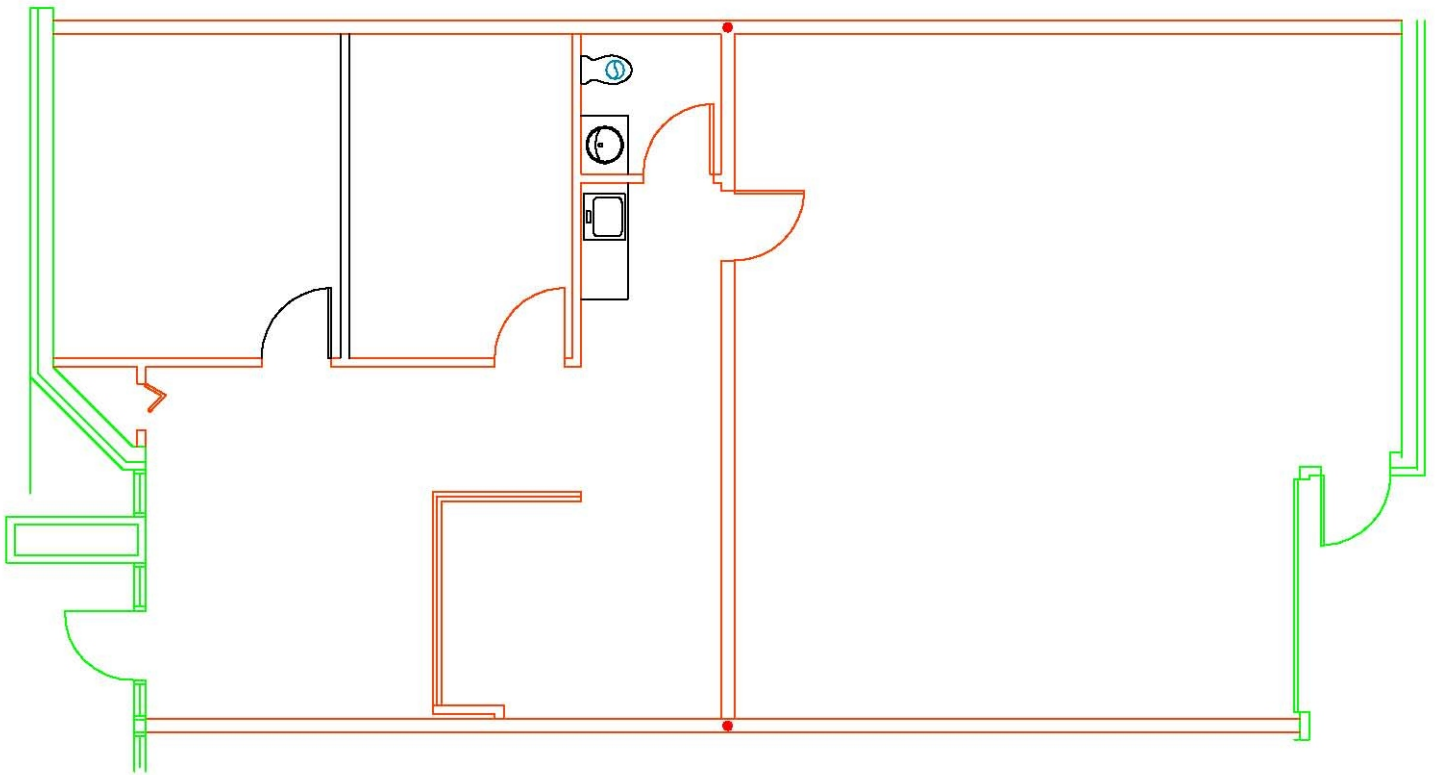
4025 Pleasantdale Rd.
Atlanta, GA 30340

ING 
REAL ESTATE

4025 Pleasantdale Rd, Suite 535

1,812 Square Feet Available

Available Space:	1,812 sf	Sprinkler:	No
Total Building:	25,500 sf	Office:	1,122 sf
Bay Size:	30' x 30'	Stacking Height:	12'
Building Depth:	60'	Doors:	1 DI



For Leasing Information, Contact:

Tom Crowe

404.691.4007 Tom.crowe@hodgesml.com

3350 Riverwood Pkwy, Suite 850, Atlanta, GA 30339