

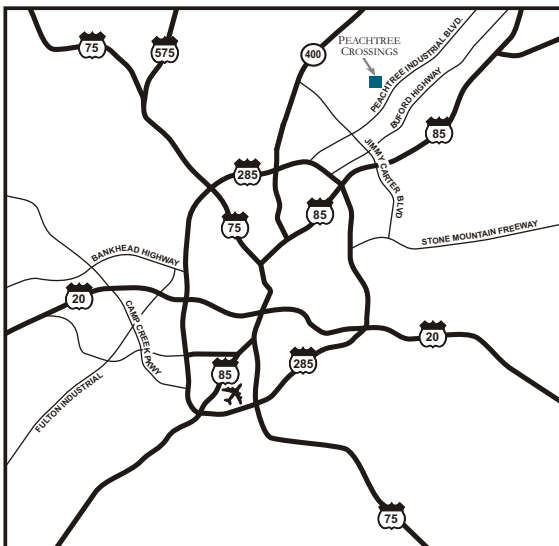


HODGES
MANAGEMENT AND
LEASING COMPANY

For Lease
7,525 sf

5824 Peachtree Corners

Peachtree Crossings



SUITE D

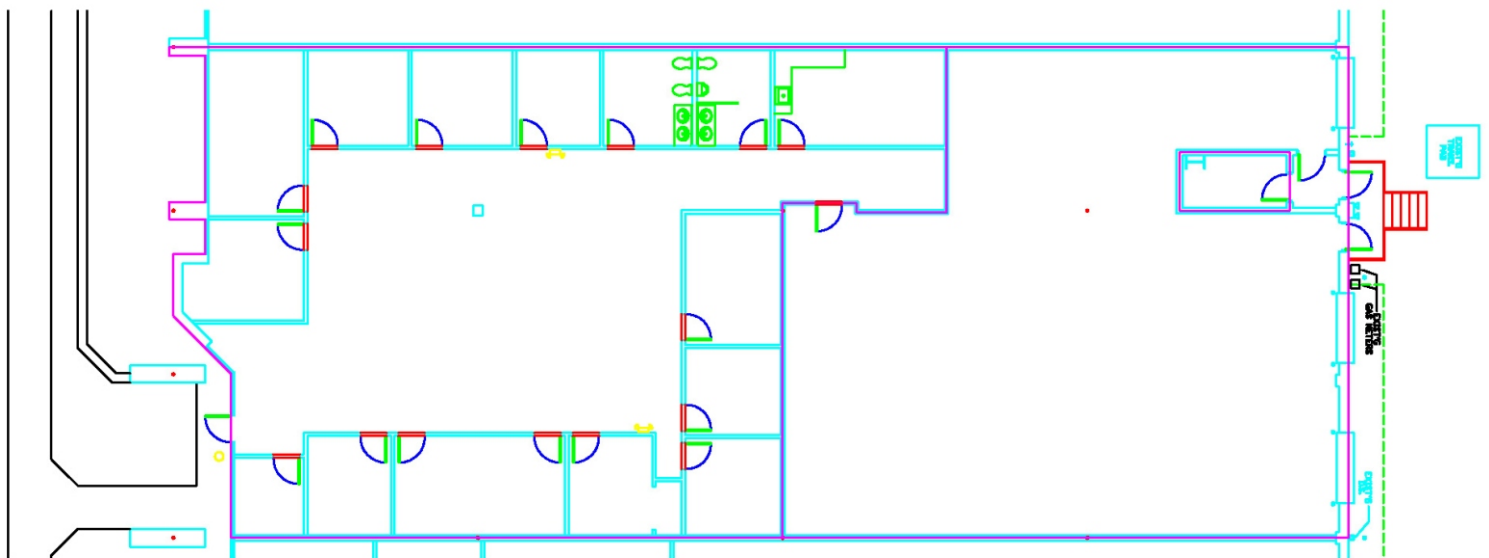
5824 Peachtree Corners
Norcross, GA 30092

ING 
REAL ESTATE

5824 Peachtree Corners, Suite D

7,525 Square Feet Available

Available Space:	7,525 sf	Sprinkler:	Yes
Total Building:	81,102 sf	Roof:	Single Ply
Bay Size:	40' x 40'	Stacking Height:	18'
Office:	4,063 sf	Doors:	3 Dock High



For Leasing Information, Contact:

Chet Koenig

404.691.4007 Chet.koenig@hodgesml.com

3350 Riverwood Pkwy, Suite 850, Atlanta, GA 30339