



HODGES
MANAGEMENT AND
LEASING COMPANY

For Lease
3,810 sf

5875 Peachtree Industrial Blvd.
Nortech Business Park



Suite 140

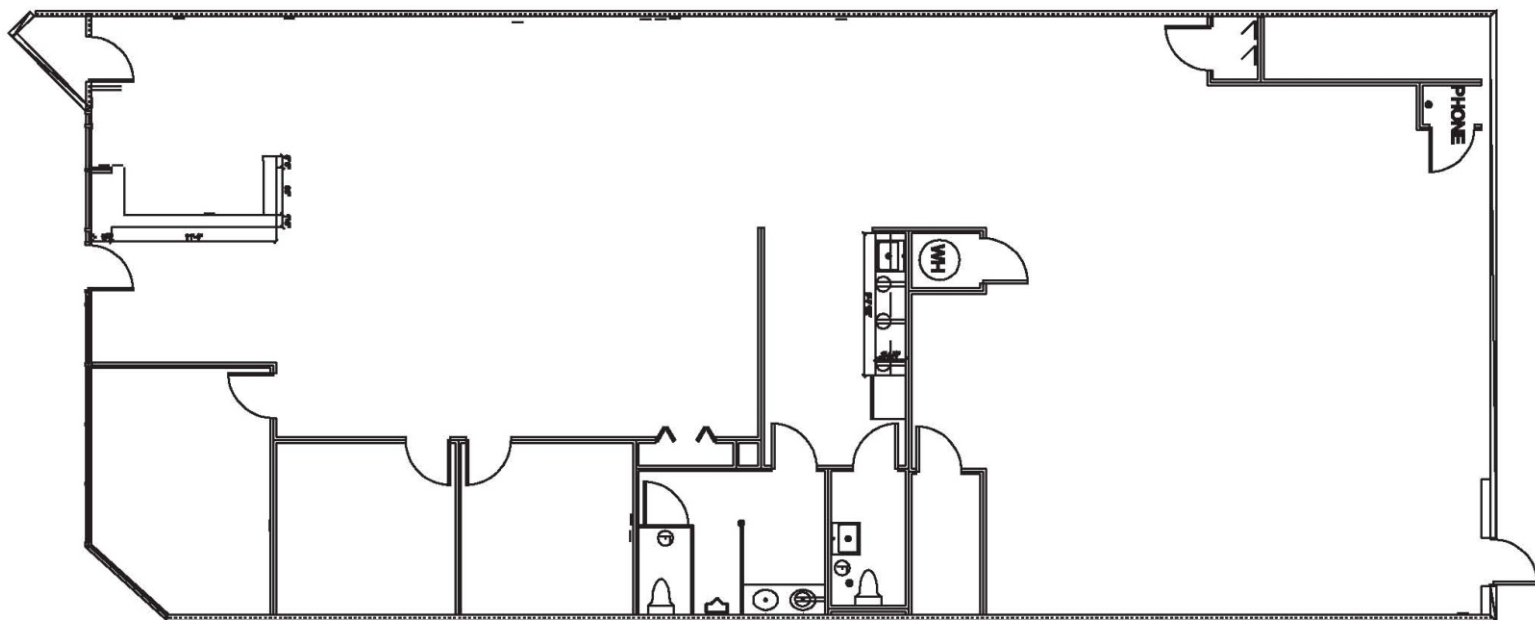
5875 Peachtree Industrial
Boulevard

Norcross, GA 30092

5875 Peachtree Industrial, Suite 140

3,810 Square Feet Available

Available Space:	3,810 sf	Sprinkler:	Yes
Total Building:	29,550 sf	Roof:	Single Ply
Bay Size:	40' x 36'	Stacking Height:	18'
Doors:	1 (8 x 10) grade level	Office:	100%



For Leasing Information, Contact:

Chet Koenig

chet.koenig@hodgesml.com 404.691.4007

3350 Riverwood Pkwy, Suite 850, Atlanta, GA 30339