



HODGES
MANAGEMENT AND
LEASING COMPANY

For Lease
23,361 sf

6356 Corley Rd
Peachtree Corners



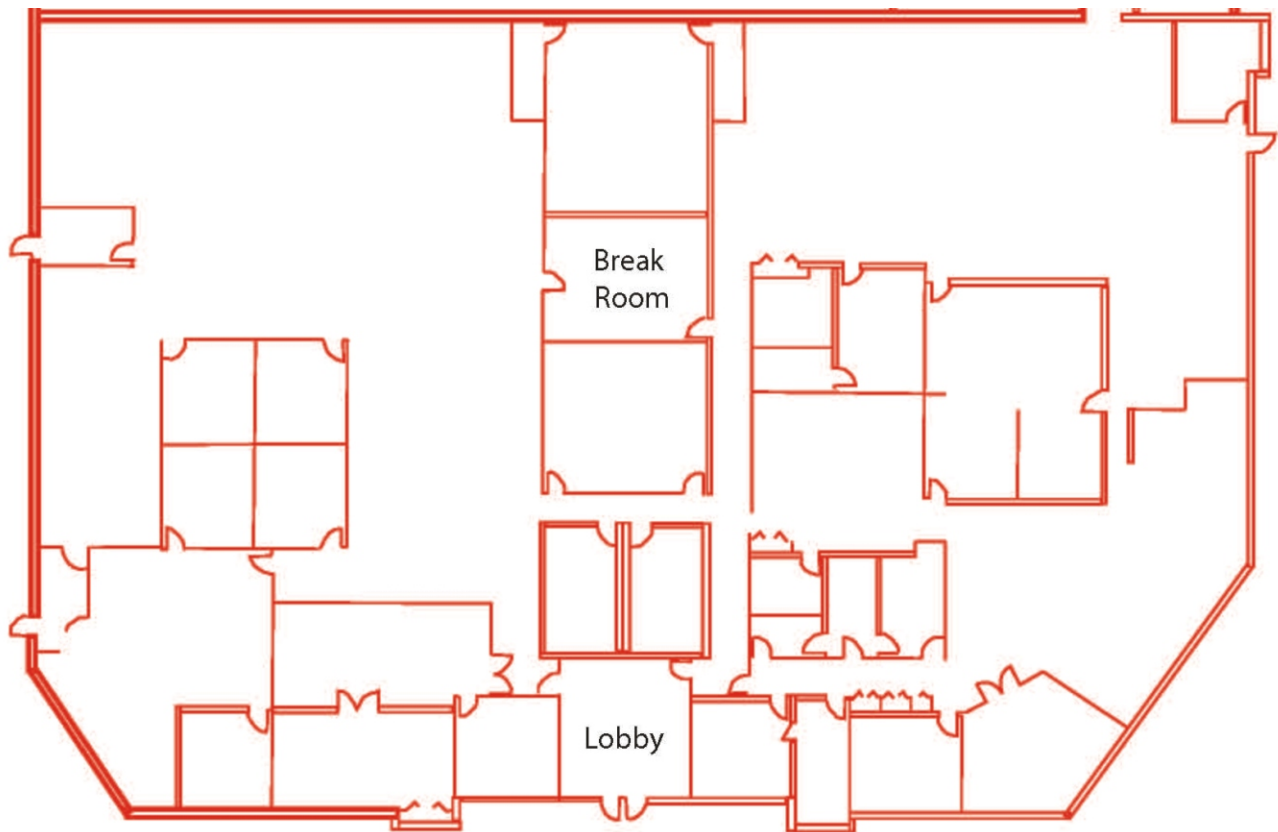
6356 Corley Rd.
Norcross, GA 30092

Owned By:
ING
REAL ESTATE

6356 Corley Road

23,361 Square Feet Available

Available Space:	23,361 sf	Stacking Height:	22'11
Total Building:	46,723 sf	Bay Size:	41'8 x 37'8
Office:	23,361 sf	Doors:	4 DH (Knock Out Panels)
Sprinkler:	Yes		



For Leasing Information, Contact:

Chet Koenig

404.691.4007

chet.koenig@hodgesml.com

3350 Riverwood Pkwy, Suite 850

Atlanta, GA 30339