



HODGES
MANAGEMENT AND
LEASING COMPANY

For Lease
5,889 sf

6796 Jimmy Carter Blvd.
Peachtree Corners



Suite F

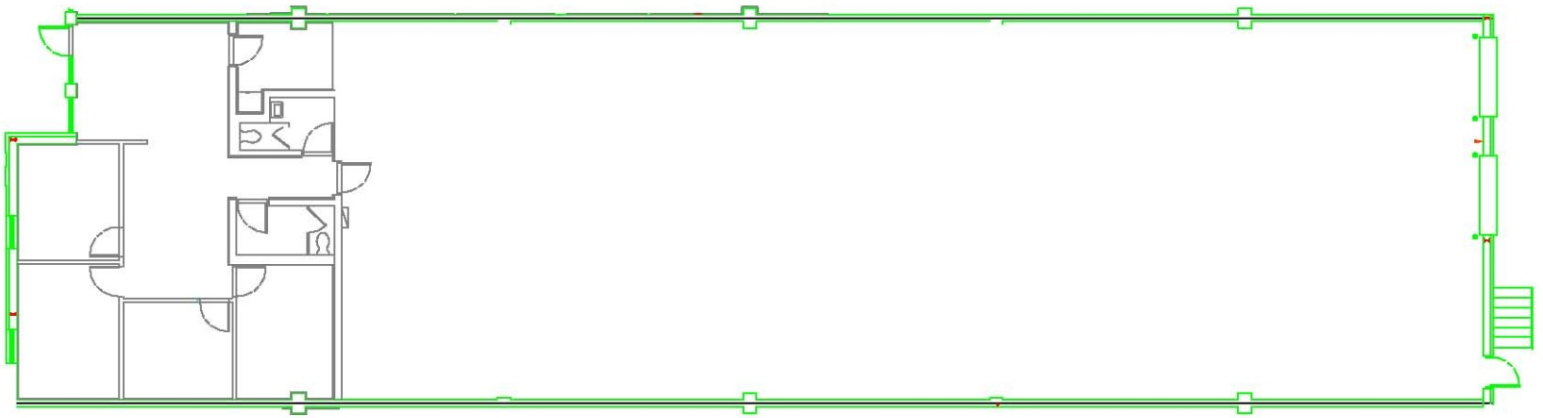
6796 Jimmy Carter Blvd.
Norcross, GA 30092

ING 
REAL ESTATE

6796 Jimmy Carter Blvd, Suite F

5,889 Square Feet Available

Available Space:	5,889sf	Sprinkler:	Yes
Total Building:	41,525 sf	Stacking Height:	22'
Bay Size:	39' x 50'	Office:	1,326 sf
Doors:	2 (8 x 10) DH		



For Leasing Information, Contact:

Chet Koenig

404.691.4007

Chet.koenig@hodgesml.com

3350 Riverwood Pkwy, Suite 850

Atlanta, GA 30339