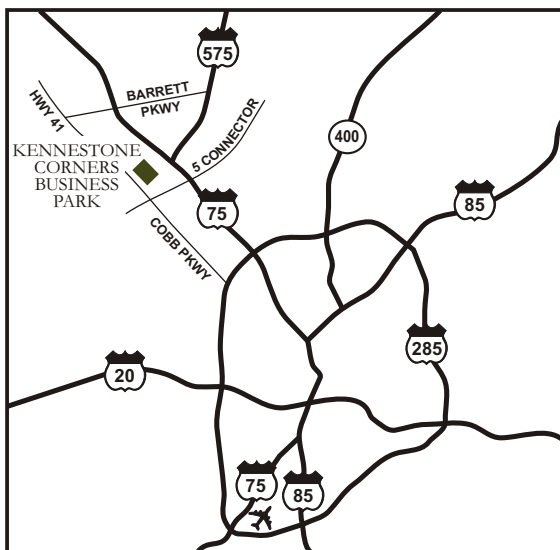




**HODGES**  
MANAGEMENT AND  
LEASING COMPANY

**For Lease**  
**53,737 sf**

1230 Kennestone Circle  
Kennestone Corners



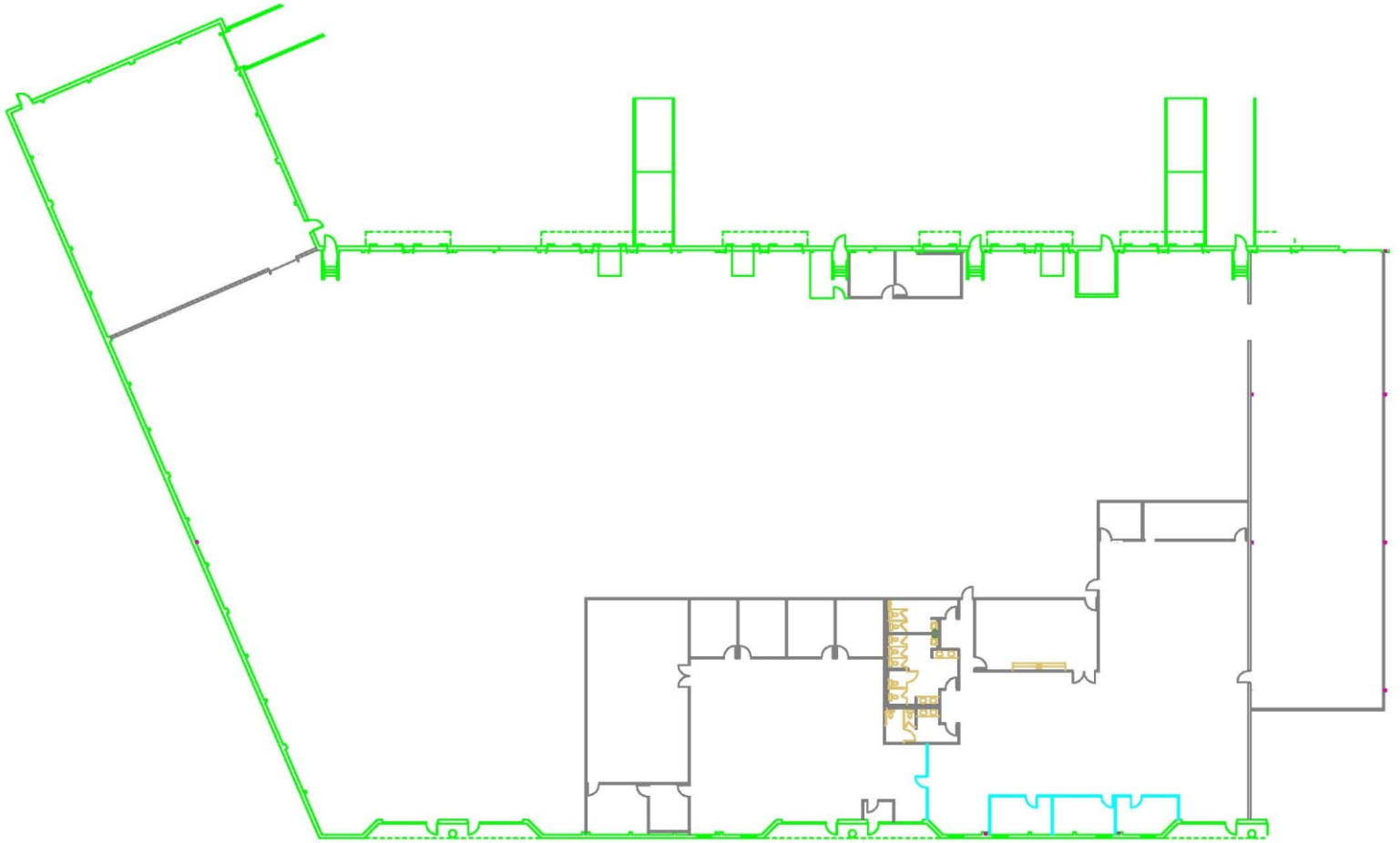
**SUITE D**

1230 Kennestone Circle  
Marietta, GA 30066

**ING**   
REAL ESTATE

# 1230 Kennestone Circle, Suite D

53,737 Square Feet Available



---

Available Space:	53,737 sf	Stacking Height:	20'	Bay Size:	36 x 40
Total Building:	78,112 sf	Doors:	9 (9 x 9) DI; 3 (9 x 9) DI; 1 (10 x 12) DI; 3 (10 x 12) KO	Sprinkler:	Yes
				Office:	14,249 sf

**Tom Crowe**

**404.691.4007**

[Tom.crowe@hodesml.com](mailto:Tom.crowe@hodesml.com)

3350 Riverwood Pkwy, Suite 850, Atlanta, GA 30339