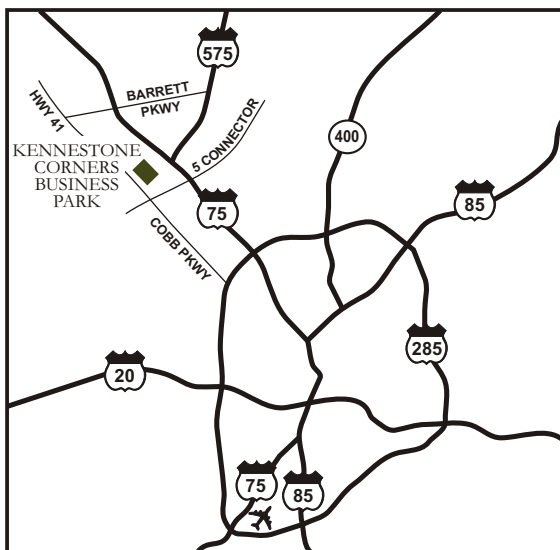




**HODGES**  
MANAGEMENT AND  
LEASING COMPANY

**For Lease**  
**16,885 sf**

1257 Kennestone Circle  
Kennestone Corners



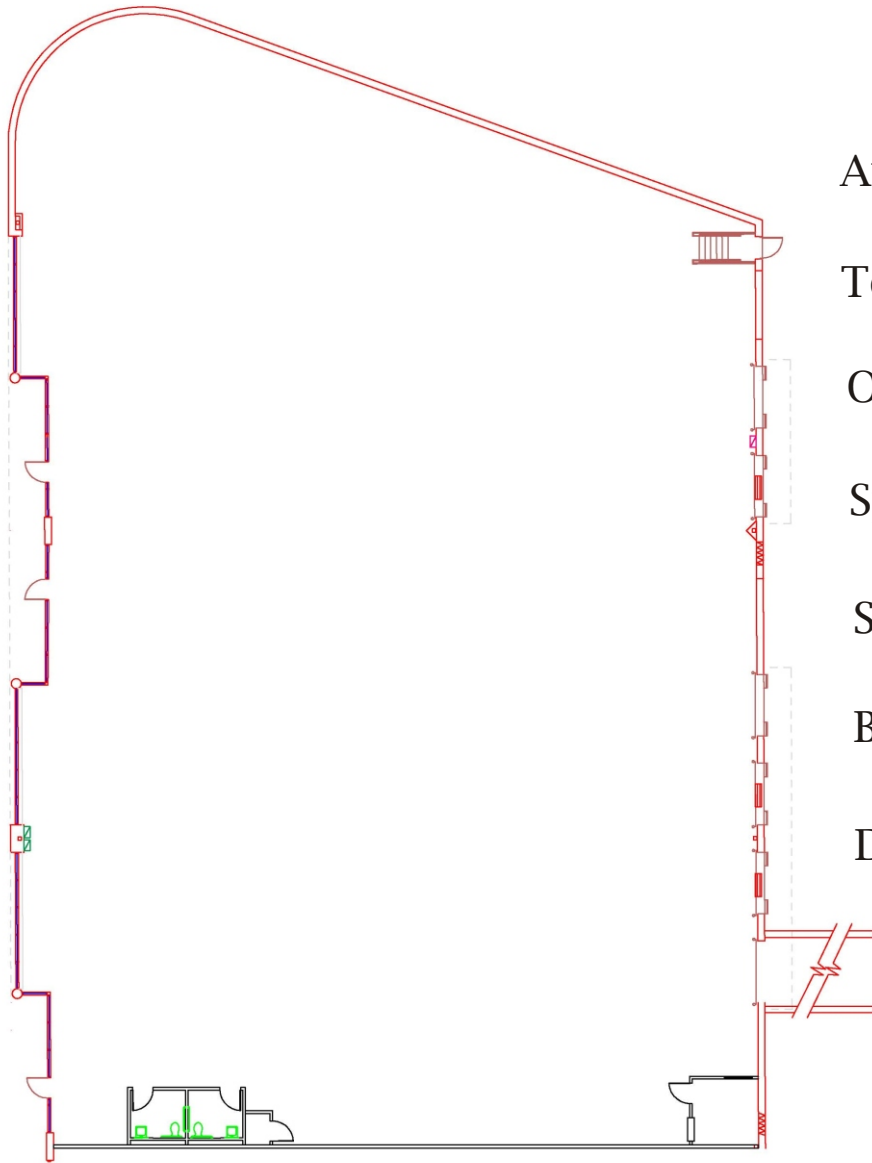
**SUITE A**

1257 Kennestone Circle  
Marietta, GA 30066

Owned By:  
**ING**   
REAL ESTATE

# 1257 Kennestone Circle, Suite A

## 16,885 Square Feet Available



Available Space:	16,885 sf
Total Building:	49,848 sf
Office:	148 sf
Sprinkler:	Yes
Stacking Height:	20'
Bay Size:	36'6 x 45'
Doors:	6 (9 x 9) DH; 1 (10 x 10) KO

**For Leasing Information, Contact:**

**Tom Crowe**

**404.691.4007**

**[Tom.crowe@hodesml.com](mailto:Tom.crowe@hodesml.com)**

**3350 Riverwood Pkwy, Suite 850, Atlanta, GA 30339**