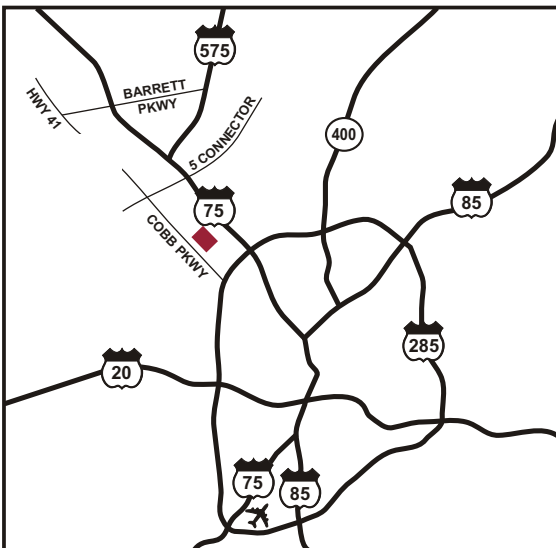




HODGES
MANAGEMENT AND
LEASING COMPANY

For Lease
10,000 sf

2171 Kingston Ct.
Kingston Court



SUITE I

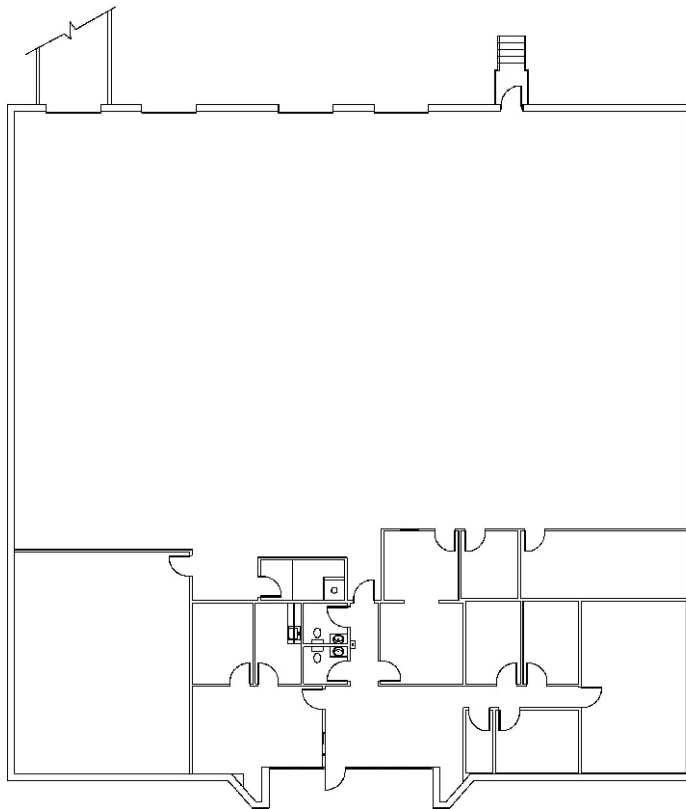
2171 Kingston Ct.
Marietta, GA 30067

ING

2171 Kingston Court, Suite I

10,000 Square Feet Available

Available Space:	10,000 sf	Sprinkler:	Yes
Total Building:	63,214 sf	Bay Size:	33' x 33'
Office:	3,332	Stacking Height:	18'
Doors:	3 DH; 1 DI	Building Depth:	120'



For Leasing Information, Contact:
Tom Crowe

404.691.4007 Tom.crowe@hodgesml.com

3350 Riverwood Pkwy, Suite 850, Atlanta, GA 30339